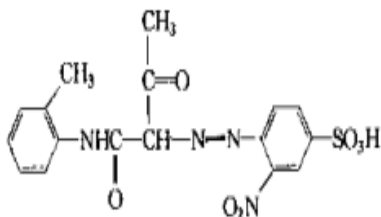


## Pigment Yellow 14 Technical Data Sheet

### Chemical Structure :-

Mass tone: 5%

Tint Tone: 1:10



### General Description:-

### Physical Properties:-

<b>Trade Name</b>	Pigment Yellow 14
<b>CAS NO</b>	5468-75-7
<b>C.I. No.</b>	21095
<b>Chemical Class</b>	DI AZO
<b>EU No.</b>	226-789-3
<b>Hue</b>	Yellow

<b>Appearance</b>	Strong Yellow Powder
<b>Sieve Residue on 45 μ</b>	<1%
<b>Bulk Density</b>	1.6 gm/cm <sup>3</sup>
<b>Moisture Content</b>	Max.1%
<b>Electric Conductivity (us/cm)</b>	≤500
<b>PH Value</b>	7.0-8.0

### APPLICATION:-

<b>PAINT</b>	Decorative Paints/Industrial Paints/Emulsion Paints
<b>INK</b>	Water based, Gravure based inks
<b>TEXTILES</b>	Textile Printing
<b>PLASTICS</b>	MASTER BATCH

### PACKAGE:-

25kg bag or drum with pallets.

**PIGMENT YELLOW 14**

**ASAHI TENNANTS COLOR PVT. LTD.**

**PAGE NO.1**

**Regd. Office: Asahi Tennants Colors Limited.**  
Asahi House<sup>2</sup>13, Aaryans Corporate Park,  
Near shilaj Railway Crossing, Thaltej- Shilaj Road, Thaltej,  
Ahmedabad-380059,

**Tele : +91-9820472046**  
**E-mail : shailesh@atccolor.com**  
**E-mail :qc.azo@atccolor.com**